

## OUR FACILITIES

*CareMeridian* provides a continuum of high quality, cost-effective post-acute care and rehabilitation options to people of all ages with brain, spinal cord and other life-altering injuries and medically-complex illnesses. With program locations throughout the Western United States, *CareMeridian* offers a distinctive service delivery model, merging an experienced and skilled health care and rehabilitation team with state-of-the-art technology in community-based program settings designed to meet the unique needs of those we serve at every stage of their recovery.

*CareMeridian* entered the Nevada marketplace in 2004 with its 18-bed facility in Las Vegas. In 2010, *CareMeridian* Las Vegas doubled its size and added an additional 17 beds to open a pediatric wing, which serves as the only subacute pediatric facility within the state of Nevada. The location offers a 1:4 staff-to-patient ratio, the most innovative equipment and individualized care plans.

*CareMeridian* is part of The MENTOR Network, a national network of local providers serving at-risk youth, individuals with intellectual and developmental disabilities and people with brain, spinal cord and other catastrophic illnesses and injuries in nearly 40 states.

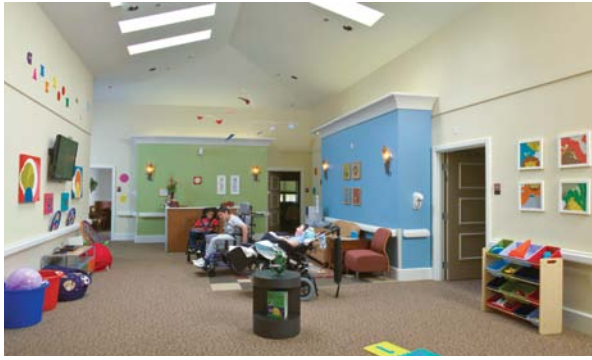


### OUR LOCATION

*CareMeridian* Las Vegas  
Clark County  
7690 Carmen Blvd.  
Las Vegas, NV 89128  
702.255.7399  
[www.caremeridian.com](http://www.caremeridian.com)



*Our Las Vegas  
Pediatric Unit*



## OUR PEDIATRIC UNIT

*CareMeridian's* state-of-the-art Pediatric Unit was designed to provide children with a safe, home-like environment, while receiving specialized, skilled care during their recovery period. We understand the unique needs of children. That's why we've created an atmosphere favorable to our young patients' recovery, including distinctly-decorated rooms and rehabilitation equipment specifically designed for them. Our friendly staff makes every effort to make sure your child feels safe and happy at *CareMeridian*.

Within our Pediatric Unit, we work one-on-one with the children for their individual intense rehabilitation needs. Our therapy team utilizes equipment that is both familiar and fun. Wii-hab (therapy utilizing a Nintendo home video game) offers a dynamic and engaging interactive approach that focuses on improving motor and visual skills, as well as cognition.

Through weekly interdisciplinary team meetings, parents are provided with comprehensive, up-to-date reports on their child's recovery progress. We involve parents in every level of their child's recovery. This positive family dynamic enhances and can accelerate the healing process. Additionally, we are sensitive to how difficult it is to be separated from your child. That's why we provide family members the opportunity to stay overnight with their child if they desire.

Should your child require ongoing care after discharge, our dedicated care team visits your home to identify all possible difficulties and then educates your family on any special needs your child may have to ensure the transition is both easy and comfortable.



## OUR PROGRAMS

- Acquired Brain Injuries (traumatic, anoxic, aneurysms/bleeds, cerebral vascular accidents)
- Spinal Cord Injuries (all levels, including Halo care)
- Complex Wound Care (including Vac therapy)
- Burn Care
- Pulmonary (including vent care and weaning, trach care, suctioning and decannulation)
- Congenital Disorders (including anomalies, Cerebral Palsy and Spina Bifida)
- Amputee Care
- Neuromuscular Disorders (including Guillain-Barre, Muscular Dystrophy and Myasthenia Gravis)
- Medically Complex (including multiple trauma/ fractures; multiple IV antibiotic therapy; isolation; and TPN, G - and J-tube feedings)
- High-Intensity Rehabilitation (licensed physical, occupational and speech therapists; recreational therapy, neuropsychological services, social services and community integration)



## OUR CARE TEAM

With an industry leading 1:4 staff-to-patient ratio and 24/7 care, *CareMeridian* offers individualized care plans and personalized attention with our Interdisciplinary Treatment Team composed of: physicians, nurses, case managers; social workers; physical speech, occupational and respiratory therapists; neuropsychological specialists; activities directors; and dietitians.

## OUR POINT OF DIFFERENCE

Unlike most post-acute care alternatives, *CareMeridian* provides a non-institutional-like environment, creating surroundings conducive to quicker recovery. Each facility features sophisticated equipment, outdoor therapeutic areas and personalized bedrooms to make our patients feel like they are at home. *CareMeridian* has received accreditation by the Joint Commission on Accreditation of Healthcare Organizations (JCAHO) and has been recognized for meeting the Commission's healthcare quality and safety standards.

## OUR FUNDING OPTIONS

At *CareMeridian*, we strive to provide a higher quality and lower cost alternative, working closely with a variety of payors, including most major insurance carriers in Nevada.